

MYSTIC MOMENTS

CERTIFICATE OF ANALYSIS

Product Name LILAC FRAGRANCE

Flashpoint 86 °C

Best Before Date October 2026

Batch No 4521903

	Test Method	Results	Specification Limits
Colour / Appearance	FTM-001	Matches Standard	Clear, colourless to pale yellow, liquid
Specific Gravity @ 20°C	FTM-012A	0.958	0.949 - 0.969
Refractive Index @ 20°C	FTM-012B	1.443	1.436 - 1.451
Odour	FTM-018	Matches Standard	Matches Standard

ALLERGEN DECLARATION

Fragrance ingredients restricted as potential allergens in Annex III of the European Cosmetic Regulation (EC) 1223/2009 and its amendments and in Schedule 34 of the Product Safety and Metrology etc. (Amendment etc.) (EU Exit) Regulations 2019 Statutory Instrument.

LILAC FRAGRANCE

Ingredient Name	CAS	Concentration (%)
ALPHA-ISOMETHYL IONONE	127-51-5	1.330%
AMYL CINNAMAL	122-40-7	n.d.
AMYLCINNAMYL ALCOHOL	101-85-9	n.d.
ANISE ALCOHOL	105-13-5	n.d.
BENZYL ALCOHOL	100-51-6	n.d.
BENZYL BENZOATE	120-51-4	n.d.
BENZYL CINNAMATE	103-41-3	n.d.
BENZYL SALICYLATE	118-58-1	n.d.
BUTYLPHENYL METHYLPROPIONAL	80-54-6	n.d.
CINNAMAL	104-55-2	n.d.
CINNAMYL ALCOHOL	104-54-1	0.040%
CITRAL	5392-40-5	n.d.
CITRONELLOL	106-22-9, 1117-61-9, 26489-01-0, 6812- 78-8, 141-25-3, 7540-51-4	0.851%
COUMARIN	91-64-5	n.d.
EUGENOL	97-53-0	n.d.
EVERNIA FURFURACEA EXTRACT	90028-67-4, 68648- 41-9, 68917-40-8	n.d.
EVERNIA PRUNASTRI EXTRACT	90028-68-5, 68917- 10-2, 9000-50-4	n.d.
FARNESOL	4602-84-0	n.d.
GERANIOL	106-24-1	6.300%
HEXYL CINNAMAL	101-86-0	n.d.
HYDROXYCITRONELLAL	107-75-5	0.850%
HYDROXYISOHEXYL 3-CYCLOHEXENE CARBOXALDEHYDE	31906-04-4, 51414- 25-6	n.d.
ISOEUGENOL	97-54-1, 5932-68-3, 5912-86-7	0.850%
LIMONENE	5989-27-5	0.130%
LINALOOL	78-70-6, 126-91-0	0.366%
METHYL 2-OCTYNOATE	111-12-6	0.040%

(n.d. = not detectable. Detection limit is 10ppm)

This declaration is a result of a calculated analysis of the formulation. These calculated concentrations do not replace chromatographic quantification on individual batches. Please note that the information contained herein is provided in good faith and is, to the best of our current knowledge, true and accurate at the time it is given, and may be subject to change. We are not liable for any damages that may result from the misuse of this data. It is the responsibility of the person(s) placing the finished product on the market to perform their own evaluation including with respect to finished product applications. Any Customer product, marketing or other claims are the Customer's ultimate responsibility.

MYSTIC MOMENTS

GMO, Vegetarian & Vegan Suitability Statement

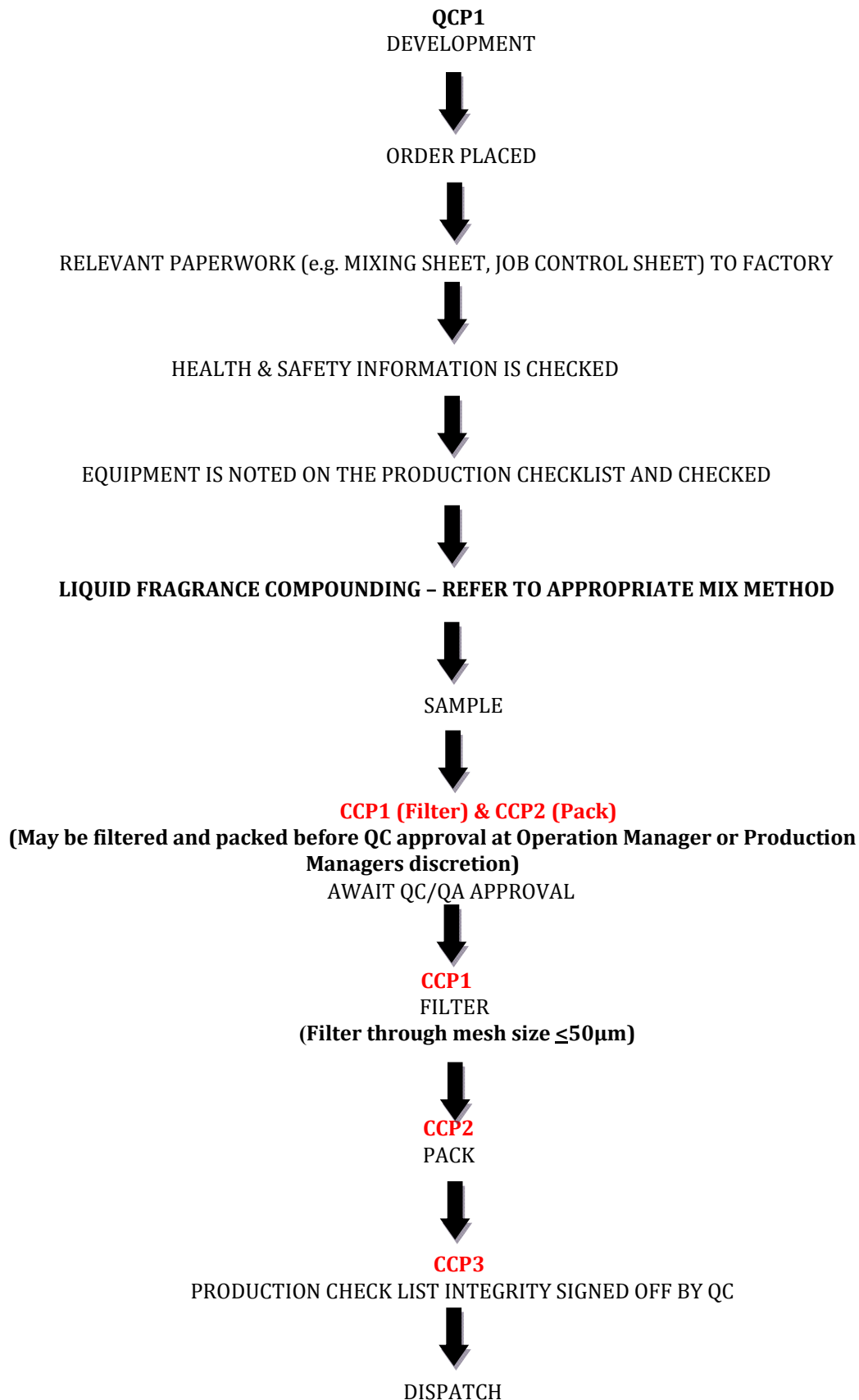
MADAR Corporation Limited can confirm that the above listed product has not been tested in animals and does not contain dairy or any other animal product, by product or derivative and is therefore suitable for vegetarian and vegan use.

We hereby state and certify that the the above is also not derived/ produced from a raw material that has been genetically modified.

01/07/2023

MYSTIC MOMENTS

FLOW DIAGRAM INDICATING THE CRITICAL CONTROL POINTS LILAC FRAGRANCE OIL



CERTIFICATE OF CONFORMITY

This Certificate assesses the conformity of the fragrance mixture with IFRA Standards and provides restrictions for use! as necessary. It is based only on those materials subject to IFRA Standards for the toxicity endpoints described in each! Standard.It also provides information on any restrictions due to the EU Cosmetic Regulation.

This Certificate does therefore not replace a comprehensive safety assessment of the fragrance mixture.

CERTIFYING PARTY:

Madar Corporation Limited
19 - 20 Sandleheath Industrial Estate
SP6 1PA

CERTIFICATE DELIVERED TO:

SCOPE OF THE CERTIFICATE:

LILAC FRAGRANCE COMPULSORY INFORMATION:

We certify that the above mixture is in compliance with the Standards of the INTERNATIONAL FRAGRANCE! ASSOCIATION (IFRA), up to and including the 51st Amendment to the IFRA Code of Practice (published June 2023)! and the European Cosmetic Regulation (EC) 1223/2009 & its modifications, provided it is used in the following categories! at a maximum concentration level of:

IFRA Categories [see Annex 1 below for details]	Maximum Level of use (%)
IFRA Category 1	Not approved
IFRA Category 2	0.67%
IFRA Category 3	9.76%
IFRA Category 4	12.94%
IFRA Category 5A	3.17%
IFRA Category 5B	3.17%
IFRA Category 5C	3.17%
IFRA Category 5D	1.05%
IFRA Category 6	Not approved
IFRA Category 7A	12.38%
IFRA Category 7B	12.38%
IFRA Category 8	1.05%
IFRA Category 9	24.70%
IFRA Category 10A	17.46%
IFRA Category 10B	84.12%
IFRA Category 11A	1.05%
IFRA Category 11B	1.05%
IFRA Category 12	Not limited

For other kinds of application or use at higher concentration levels, a new evaluation can be needed;

EU COSMETIC INFORMATION:

We certify that the above mixture is in compliance with the EU Cosmetic Regulation 1223/2009 and its amendments, provided it is used in the following applications at a maximum concentration level of:

Cosmetic Application	Maximum Level of use (%)
Deodorant spray	2.35%
Face Make-up products	2.35%
Eye Make-up and remover	2.35%
Fine Fragrance	2.35%
Eau de Toilette	2.35%
Fragrancing cream	2.35%
Sunscreen products	2.35%
Body lotion spray	2.35%
Nail care products	2.35%
Hair products (spray/aerosol)	2.35%
Hair dye	2.35%
Other leave-on cosmetic products	2.35%
Hand wash products	2.35%
Other rinse off cosmetic products	2.35%
Oral products	Not approved

Regulatory Affairs Department

ANNEX 1

Below is an extract of information provided by IFRA in relation to types of application present in each IFRA Category. Additional information about IFRA Categories can be found in the Guidance to IFRA Standards, issued by IFRA.

IFRA Category	Product Type
IFRA Category 1	Leave on products generally applied to lips: Lip Products of all types (solid and liquid lipsticks, balms, clear or colored, etc.); Children's toys
IFRA Category 2	Leave on products generally applied to axillae: Deodorant and antiperspirant products of all types including any product with intended or reasonably foreseeable use on the axillae or labelled as such (spray, stick, roll-on, under-arm, deo-cologne, etc.); Body sprays (including body mist)
IFRA Category 3	Products generally applied to the face using fingertips: Eye products of all types (eye shadow, mascara, eyeliner, eye make-up, eye masks, eye pillows, etc.) including eye care and moisturizer; Facial make up and foundation; Make-up remover for face and eyes; Nose pore strips; Wipes or refreshing tissues for face, neck, hands, body; Body and face paint (for children and adults); Facial masks for face and around the eyes
IFRA Category 4	Fragrancing products generally applied to neck, face and wrists: Hydroalcoholic and non-hydroalcoholic fine fragrance of all types (Eau de Toilette, Parfum, Cologne, solid perfume, fragrancing cream, etc.), aftershaves of all types (except creams and balms); Fragranced bracelets; Ingredients of perfume kits and fragrance mixtures for cosmetic kits; Scent pads, foil packs; Scent strips for hydroalcoholic products
IFRA Category 5A	Leave on products applied to the body using the hands (palms): Body creams, oils, lotions of all types; Foot care products (creams and powders); Insect repellent (intended to be applied to the skin); All powders and talc (excluding baby powders and talc)
IFRA Category 5B	Leave on products applied to the face using the hands (palms): Facial toner; Facial moisturizers and creams (including care products for beard and moustache)
IFRA Category 5C	Leave on products applied to the hands using the hands (palms): Hand cream; Nail care products including cuticle creams, nail lacquer remover, etc.; Hand sanitizers
IFRA Category 5D	Leave on products applied to babies using the hands (palms); Baby cream/lotion, baby oil, baby powders and talc
IFRA Category 6	Products with oral and lip exposure: Toothpaste; Mouthwash, including breath sprays; Toothpowder, strips, mouthwash tablets
IFRA Category 7A	Rinse-off products applied to hair with hand contact: Hair permanent or other hair chemical treatments (rinse-off) (e.g., relaxers), including rinse-off hair dyes
IFRA Category 7B	Leave-on products applied to hair with hand contact: Hair sprays of all types (pumps, aerosol sprays, etc.); Hair styling aids non sprays (mousse, gels, leave-on conditioners); Hair permanent or other hair chemical treatments (leave-on) (e.g., relaxers), including leave-on hair dyes; Shampoo - Dry (waterless shampoo); Hair deodorizer, hair perfume
IFRA Category 8	Products with significant anogenital exposure: Intimate wipes; Intimate deodorant spray; Tampons; Baby wipes; Toilet paper (wet)
IFRA Category 9	Rinse off products with body and hand exposure: Bar soap; Shampoo of all type; Cleanser for face (rinse-off); Conditioner (rinse-off); Liquid soap; Body washes and shower gels of all types; Baby wash, bath, shampoo; Bath gels, foams, mousses, salts, oils and other products added to bathwater (e.g., bath bombs); Foot care products (feet are placed in a bath for soaking); Shaving creams of all types (stick, gels, foams, etc.); All depilatories (including facial) and waxes for mechanical hair removal; Shampoos for pets (safety assessments only relate to the human exposure during the application of such products, not to the exposure of the product on the pet).
IFRA Category 10A	Household care products with mostly hand contact, excluding aerosol/spray products: Hand wash laundry detergent (including concentrates); Laundry pre-treatment of all types (e.g. paste, sprays, sticks); Hand dishwashing detergent (including concentrates); Hard surface cleaners of all types (bathroom and kitchen cleansers, furniture polish, etc.); Machine laundry detergents with skin contact (e.g., liquids, powders) including concentrates; Toilet seat wipes; Fabric softeners of all types excluding fabric softener sheets; Household cleaning products, other types including fabric cleaners, soft surface cleaners, carpet cleaners, furniture polishes sprays and wipes, leather cleaning wipes, stain removers, fabric enhancing sprays, treatment products for textiles (e.g., starch sprays, fabric treated with fragrances after wash, deodorizers for textiles or fabrics); Floor wax; Fragranced oil for lamp ring, reed diffusers, pot-pourri, liquid refills for air fresheners (non-cartridge systems), etc.; Ironing water (Odorized distilled water); Dry cleaning kits (involving manual application on the textile)
IFRA Category 10B	Household care products with mostly hand contact, aerosol/spray products: Animal sprays applied to animals of all types (safety assessments only relate to the human exposure during the application of such products, not to the exposure of the product on the pet); Air freshener sprays, manual, including aerosol and pump; Aerosol/spray insecticides
IFRA Category 11A	Products with intended skin contact but minimal transfer of fragrance to skin from inert substrate, without UV exposure: Feminine hygiene conventional pads, liners, interlabial pads; Baby diapers; Incontinence pant, pad; Toilet paper (dry)
IFRA Category 11B	Products with intended skin contact but minimal transfer of fragrance to skin from inert substrate, with potential UV exposure: Tights with moisturizers; Scented socks, gloves; Facial tissues (dry tissues); Napkins; Pillow spray; Paper towels; Wheat bags; Facial masks (paper/protective) e.g. surgical masks not used as medical device; Fertilizers, solid (pellet or powder)
IFRA Category 12	Products not intended for direct skin contact, minimal or insignificant transfer to skin: Candles of all types (including encased); Laundry detergents for machine wash with minimal skin contact (e.g. Liquid tabs, pods); Automated air fresheners and fragrancing of all types (concentrated aerosol with metered doses

(range 0.05-0.5mL/spray), plug-ins, closed systems, solid substrate, membrane delivery, electrical, powders, fragrancing sachets, incense, liquid refills (cartridge), air freshening crystals, solid non aerosol car diffuser); Air delivery systems; Cat litter (safety assessments only relate to the human exposure during the application of such products, not to the exposure of the product on the pet); Cell phone cases; Deodorizers/maskers not intended for skin contact (e.g. fabric drying machine deodorizers, carpet powders); Dry cleaning kits (placed in the dryer); Dryer sheets and fabric softener sheets; Fuels; Insecticides (e.g. mosquito coil, paper, electrical, for clothing) excluding aerosols/sprays; Joss sticks or incense sticks; Dishwash detergent and deodorizers - for machine wash; Olfactive board games; Paints; Plastic articles (excluding toys); Scratch and sniff; Scent pack; Scent delivery system (using dry air technology); Shoe polishes; Rim blocks (Toilet); Toilet gel; Scent beads

SAFETY DATA SHEET

In accordance with REACH Regulation EC No.1907/2006!

Product: LILAC FRAGRANCE 3

Version:

Section 1. Identification of the substance or the mixture and of the supplier

1.1 Product Identifier

Product identifier: LILAC FRAGRANCE (Contains:ALPHA-ISOMETHYL IONONE, GERANIOL, ISOEUGENOL, TETRAMETHYL ACETYLOCTAHYDRONAPHTHALENES)

Other identifiers: None

1.2 Relevant identified uses of the substance of mixture and uses advised against

Product uses: Fragrances

1.3 Details of the supplier of the safety data sheet

Company name: Madar Corporation Limited

Company address: 19 - 20 Sandealth Industrial Estate
Fordingbridge
SP6 1PA

Contact: technical@madarcorporation.co.uk

E-Mail address: 01425 655 555

Company phone:

1.4 Emergency telephone number

Emergency phone: Office Hours: +44 (0)1425 655 555

Section 2. Hazards identification

2.1 Classification of the substance or mixture

Classification under Regulation (EC) No 1272/2008

Class and category of danger: Skin Corrosion / Irritation Category 2
Eye Damage / Irritation Category 1
Sensitization - Skin Category 1
Hazardous to the Aquatic Environment - Long-term Hazard Category 2
H315, Causes skin irritation.
H317, May cause an allergic skin reaction.
H318, Causes serious eye damage.
H411, Toxic to aquatic life with long lasting effects.

2.2 Label elements

Classification under Regulation (EC) No 1272/2008

Signal word: Danger

MYSTIC MOMENTS

SAFETY DATA SHEET

In accordance with REACH Regulation EC No.1907/2006!

Product: LILAC FRAGRANCE

Version: 3

Hazard statements: H315, Causes skin irritation.
H317, May cause an allergic skin reaction.
H318, Causes serious eye damage.
H411, Toxic to aquatic life with long lasting effects.

Supplemental Information: EUH208, Contains 4-(1-METHYLETHYL)-CYCLOHEXANEMETHANOL, CITRONELLOL, HYDROXYCITRONELLAL, LIMONENE, LINALOOL, LINALYL ACETATE, METHYL 2-OCTYNOATE. May produce an allergic reaction.

Precautionary statements: P261, Avoid breathing vapour or dust.
P264, Wash hands and other contacted skin thoroughly after handling.
P272, Contaminated work clothing should not be allowed out of the workplace.
P273, Avoid release to the environment.
P280, Wear protective gloves/eye protection/face protection.
P302/352, IF ON SKIN: Wash with plenty of soap and water.
P305/351/338, IF IN EYES: Rinse cautiously with water for several minutes. Remove contact lenses, if present and easy to do. Continue rinsing.
P310, Immediately call a POISON CENTER or doctor/physician.
P333/313, If skin irritation or rash occurs: Get medical advice/attention.
P362, Take off contaminated clothing and wash before reuse.
P391, Collect spillage.
P501, Dispose of contents/container to approved disposal site, in accordance with local regulations.

Pictograms:



2.3 Other hazards

Other hazards: Sensitisers declared on a CLP Hazard Label: 4-(1-METHYLETHYL)-CYCLOHEXANEMETHANOL, CITRONELLOL, HYDROXYCITRONELLAL, LIMONENE, LINALOOL, LINALYL ACETATE, METHYL 2-OCTYNOATE
Hydrocarbon Concentration %: 0.000%

Section 3. Composition / information on ingredients

3.2 Mixtures

Contains:

Name	CAS	EC	REACH Registration No.	%	Classification for (CLP) 1272/2008	Specific Conc. Limits, M-factors and ATEs

SAFETY DATA SHEET

In accordance with REACH Regulation EC No.1907/2006!

Product: LILAC FRAGRANCE

Version: 3

GERANIOL	106-24-1	203-377-1	01-2119552430-49-xxxx	5-<10%	SCI 2-EDI 1-SS 1; H315-H317-H318,-	oral: ATE = 3600 mg/kg bw
TETRAMETHYL ACETYLOCTAHYDRON APHTHALENES	54464-57-2, 54464-59-4, 68155-66-8, 68155-67-9	259-174-3, 259-175-9, 268-978-3, 268-979-9, 915-730-3	01-2119489989-04-xxxx	1-<5%	SCI 2-SS 1B-EH C2; H315-H317-H411,-	
1,3,4,6,7,8- HEXAHYDRO- 4,6,6,7,8,8- HEXAMETHYLINDENO [5,6-C]PYRAN	1222-05-5	214-946-9	01-2119488227-29-xxxx	1-<5%	EH A1-EH C1;H410,-	
PHENETHYL ALCOHOL	60-12-8	200-456-2	01-2119963921-31-xxxx	1-<5%	ATO 4-EDI 2;H302- H319,-	dermal: ATE = 2500 mg/kg bw-oral: ATE = 1610 mg/kg bw
BENZYL ACETATE	140-11-4	205-399-7		1-<5%	EH C3;H412,-	oral: ATE = 2490 mg/kg bw
ALPHA-ISOMETHYL IONONE	127-51-5	204-846-3		1-<5%	SS 1B-EH C2;H317- H411,-	
CITRONELLOL	106-22-9, 1117-61-9, 26489-01-0, 6812-78-8, 141-25-3, 7540-51-4	203-375-0, 214-250-5, 247-737-6, 229-887-4, 205-473-9, 231-415-7	01-2119453995-23-xxxx	0.1-<1%	SCI 2-EDI 2-SS 1B; H315-H317-H319,-	dermal: ATE = 2650 mg/kg bw-oral: ATE = 3450 mg/kg bw
HYDROXYCITRONELL AL	107-75-5	203-518-7		0.1-<1%	EDI 2-SS 1B;H317- H319,-	
ISOEUGENOL	97-54-1, 5932-68-3, 5912-86-7	202-590-7, 227-678-2, 227-633-7		0.1-<1%	ATO 4-ATD 4-ATI 4- SCI 2-EDI 2-SS 1A- STO-SE 3(RI);H302- H312-H315-H317- H319-H332-H335,-	Skin Sens. 1; H317; C ≥ 0.01%-inhalation: ATE = 1.5 mg/l (dusts or mists)-dermal: ATE = 1912 mg/kg bw-oral: ATE = 1500 mg/kg bw
LINALOOL	78-70-6	201-134-4	01-2119474016-42-xxxx	0.1-<1%	SCI 2-EDI 2-SS 1B; H315-H317-H319,-	oral: ATE = 2790 mg/kg bw
LINALYL ACETATE	115-95-7	204-116-4	01-2119454789-19-xxxx	0.1-<1%	SCI 2-EDI 2-SS 1B; H315-H317-H319,-	
ACETYL HEXAMETHYL TETRALIN (AHTN)	21145-77-7, 1506-02-1	244-240-6, 216-133-4		0.1-<1%	ATO 4-EH A1-EH C1; H302-H410,-	oral: ATE = 1000 mg/kg bw
LIMONENE	5989-27-5	227-813-5		0.1-<1%	FL 3-SCI 2-SS 1B-AH 1-EH A1-EH C3;H226- H304-H315-H317- H400-H412,-	
BHT (BUTYLATED HYDROXYTOLUENE)	128-37-0	204-881-4	01-2119555270-46-xxxx	0.1-<1%	EH A1-EH C1;H410,-	
4-(1-METHYLETHYL)- CYCLOHEXANEMETH ANOL	5502-75-0, 13828-37-0	939-719-8, 237-539-8	01-2119983532-32-xxxx	0.1-<1%	SCI 2-SS 1B;H315- H317,-	
METHYL 2- OCTYNOATE	111-12-6	203-836-6		<0.1%	SS 1A-EH A1-EH C3; H317-H400-H412,-	

Substances with Community workplace exposure limits:

Name	CAS	EC	REACH Registration No.	%	Classification for (CLP) 1272/2008	Specific Conc. Limits, M-factors and ATEs
BHT (BUTYLATED HYDROXYTOLUENE)	128-37-0	204-881-4	01-2119555270-46-xxxx	0.1-<1%	EH A1-EH C1;H410,-	
PPG-2 METHYL ETHER	34590-94-8	252-104-2	01-2119450011-60-xxxx	50-100%	-;-,-	

MYSTIC MOMENTS

SAFETY DATA SHEET

In accordance with REACH Regulation EC No.1907/2006!

Product: LILAC FRAGRANCE

Version: 3

Substances that are endocrine disruptors according to Regulation (EU) 2017/2100 or Regulation (EU) 2018/605, greater than 0.1%:

Not Applicable

Substances that are persistent, bioaccumulative and toxic or very persistent and very bioaccumulative, greater than 0.1%:

Not Applicable

Section 4. First-aid measures

4.1 Description of first aid measures

Inhalation: Remove from exposure site to fresh air, keep at rest, and obtain medical attention.

Eye exposure: IF IN EYES: Rinse cautiously with water for several minutes. Remove contact lenses, if present and easy to do. Continue rinsing.

Skin exposure: IF ON SKIN: Wash with plenty of soap and water.

Ingestion: Rinse mouth with water and obtain medical attention.

4.2 Most important symptoms and effects, both acute and delayed

Causes skin irritation.

May cause an allergic skin reaction.

Causes serious eye damage.

4.3 Indication of any immediate medical attention and special treatment needed

None expected, see Section 4.1 for further information.

Section 5: Firefighting measures

5.1 Extinguishing media

Suitable media: Carbon dioxide, Dry chemical, Foam.

5.2 Special hazards arising from the substance or mixture

In case of fire, may be liberated: Carbon monoxide, Unidentified organic compounds.

5.3 Advice for fire fighters:

In case of insufficient ventilation, wear suitable respiratory equipment.

Section 6. Accidental release measures

6.1 Personal precautions, protective equipment and emergency procedures:

Avoid inhalation. Avoid contact with skin and eyes. See protective measures under Section 7 and 8.

SAFETY DATA SHEET

In accordance with REACH Regulation EC No.1907/2006!

Product: LILAC FRAGRANCE

Version: 3

6.2 Environmental precautions:

Keep away from drains, surface and ground water, and soil.

6.3 Methods and material for containment and cleaning up:

Remove ignition sources. Provide adequate ventilation. Avoid excessive inhalation of vapours. Contain spillage immediately by use of sand or inert powder. Dispose of according to local regulations.

6.4 Reference to other sections:

Also refer to sections 8 and 13.

Section 7. Handling and storage

7.1 Precautions for safe handling:

Keep away from heat, sparks, open flames and hot surfaces. - No smoking. Use personal protective equipment as required. Use in accordance with good manufacturing and industrial hygiene practices. Use in areas with adequate ventilation. Do not eat, drink or smoke when using this product.

7.2 Conditions for safe storage, including any incompatibilities:

Store in a well-ventilated place. Keep container tightly closed. Keep cool. Ground/bond container and receiving equipment. Use explosion-proof electrical, ventilating and lighting equipment. Use only non-sparking tools. Take precautionary measures against static discharge.

7.3 Specific end use(s):

Fragrances: Use in accordance with good manufacturing and industrial hygiene practices.

Section 8. Exposure controls/personal protection

8.1 Control parameters

Workplace exposure limits:

Ingredient	CAS	EC	Description	Value
BHT (BUTYLATED HYDROXYTOLUENE)	128-37-0	204-881-4	UK Long-term exposure limit (8-hour TWA) (mg/m ³)	10 mg/m ³
PPG-2 METHYL ETHER	34590-94-8	252-104-2	UK Long-term exposure limit (8-hour TWA) (ppm)	50 ppm
			UK Long-term exposure limit (8-hour TWA) (mg/m ³)	308 mg/m ³
			EU Long-term exposure limit (8-hour TWA) (ppm)	50 ppm
			EU Long-term exposure limit (8-hour TWA) (mg/m ³)	308 mg/m ³

MYSTIC MOMENTS

SAFETY DATA SHEET

In accordance with REACH Regulation EC No.1907/2006!

Product: LILAC FRAGRANCE

Version: 3

8.2 Exposure Controls

Eye / Skin Protection

Wear protective gloves/eye protection/face protection

Respiratory Protection

Ensure adequate and ongoing ventilation is maintained in order to prevent build up of excessive vapour and to ensure occupational exposure limits are adhered to. If appropriate, and depending on your patterns and volumes of use, the following engineering controls may be required as additional protective measures: a) Isolate mixing rooms and other areas where this material is used or openly handled. Maintain these areas under negative air pressure relative to the rest of the plant. b) Employ the use of Personal protective equipment - an approved, properly fitted respirator with organic vapour cartridges or canisters and particulate filters. c) Use local exhaust ventilation around open tanks and other open sources of potential exposures in order to avoid excessive inhalation, including places where this material is openly weighed or measured. In addition, use general dilution ventilation of the work area to eliminate or reduce possible worker exposures. d) Use closed systems for transferring and processing this material.

Also refer to Sections 2 and 7.

Section 9. Physical and chemical properties

9.1 Information on basic physical and chemical properties

Physical State/Colour:	Clear colourless to pale yellow liquid
Odour:	Not determined
Odour threshold:	Not determined
Melting point/freezing point:	Not determined
Boiling point or initial boiling point and boiling range:	Not determined
Flammability:	Not determined
Lower and upper explosion limit:	Not determined
Flash point:	86 °C
Auto-ignition temperature:	Not determined
Decomposition temperature:	Not relevant
pH:	Not determined
Kinematic viscosity:	Not determined
Solubility:	Not determined
Partition coefficient: n-octanol/water (log value):	Not determined
Vapour pressure:	0.22616703 mmHg
Density and/or relative density:	0.9590
Relative vapour density:	Not determined
Particle characteristics:	Not determined

9.2 Other information: None available

MYSTIC MOMENTS

SAFETY DATA SHEET

In accordance with REACH Regulation EC No.1907/2006!

Product: LILAC FRAGRANCE

Version: 3

Section 10. Stability and reactivity

10.1 Reactivity:

Presents no significant reactivity hazard, by itself or in contact with water.

10.2 Chemical stability:

Good stability under normal storage conditions.

10.3 Possibility of hazardous reactions:

Not expected under normal conditions of use.

10.4 Conditions to avoid:

Avoid extreme heat.

10.5 Incompatible materials:

Avoid contact with strong acids, alkalis or oxidising agents.

10.6 Hazardous decomposition products:

Not expected.

Section 11. Toxicological information

11.1 Information on hazard classes as defined in Regulation (EC) No 1272/2008

This mixture has not been tested as a whole for health effects. The health effects have been calculated using the methods outlined in Regulation (EC) No 1272/2008 (CLP).

Acute Toxicity:	Based on available data the classification criteria are not met.
Acute Toxicity Oral	>5000
Acute Toxicity Dermal	>5000
Acute Toxicity Inhalation	Not Available
Skin corrosion/irritation:	Skin Corrosion / Irritation Category 2
Serious eye damage/irritation:	Eye Damage / Irritation Category 1
Respiratory or skin sensitisation:	Sensitization - Skin Category 1
Germ cell mutagenicity:	Based on available data the classification criteria are not met.
Carcinogenicity:	Based on available data the classification criteria are not met.
Reproductive toxicity:	Based on available data the classification criteria are not met.
STOT-single exposure:	Based on available data the classification criteria are not met.
STOT-repeated exposure:	Based on available data the classification criteria are not met.
Aspiration hazard:	Based on available data the classification criteria are not met.

Information about hazardous ingredients in the mixture

Ingredient	CAS	EC	LD50/ATE Oral	LD50/ATE Dermal	LC50/ATE Inhalation	LC50 Route
PHENETHYL ALCOHOL	60-12-8	200-456-2	1610	2500	Not available	Not available

SAFETY DATA SHEET

In accordance with REACH Regulation EC No.1907/2006!

Product: LILAC FRAGRANCE

Version: 3

Refer to Sections 2 and 3 for additional information.

11.2 Information on other hazards

Not Applicable

Section 12. Ecological information

12.1 Toxicity:

Toxic to aquatic life with long lasting effects.

12.2 Persistence and degradability: Not available

12.3 Bioaccumulative potential: Not available

12.4 Mobility in soil: Not available

12.5 Results of PBT and vPvB assessment:

This substance does not meet the PBT/vPvB criteria of REACH, annex XIII.

12.6 Endocrine disrupting properties: Not Applicable

12.7 Other adverse effects: Not available

Section 13. Disposal considerations

13.1 Waste treatment methods:

Dispose of in accordance with local regulations. Avoid disposing into drainage systems and into the environment. Empty containers should be taken to an approved waste handling site for recycling or disposal.

Section 14. Transport information

	14.1 UN number or ID number:	14.2 UN Proper Shipping Name:	14.3 Transport hazard class (es):	Sub Risk:	14.4 Packing Group:
UN Model Regulations	UN3082	ENVIRONMENTALLY HAZARDOUS SUBSTANCE, LIQUID, N.O.S. (1,3,4,6,7,8-HEXAHYDRO-4,6,6,7,8,8-HEXAMETHYLINDENO[5,6-C]PYRAN, TETRAMETHYL ACETYLOCTAHYDRONAPHTHALENE S)	9	-	III
IMDG	UN3082	ENVIRONMENTALLY HAZARDOUS SUBSTANCE, LIQUID, N.O.S. (1,3,4,6,7,8-HEXAHYDRO-4,6,6,7,8,8-HEXAMETHYLINDENO[5,6-C]PYRAN, TETRAMETHYL ACETYLOCTAHYDRONAPHTHALENE S) MARINE POLLUTANT	9	-	III

SAFETY DATA SHEET

In accordance with REACH Regulation EC No.1907/2006!

Product: LILAC FRAGRANCE

Version: 3

ADR,RID,ADN	UN3082	ENVIRONMENTALLY HAZARDOUS SUBSTANCE, LIQUID, N.O.S. (1,3,4,6,7,8-HEXAHYDRO-4,6,6,7,8,8-HEXAMETHYLINDENO[5,6-C]PYRAN, TETRAMETHYL ACETYLOCTAHYDRONAPHTHALENE S)	9	-	III
ICAO TI	UN3082	ENVIRONMENTALLY HAZARDOUS SUBSTANCE, LIQUID, N.O.S. (1,3,4,6,7,8-HEXAHYDRO-4,6,6,7,8,8-HEXAMETHYLINDENO[5,6-C]PYRAN, TETRAMETHYL ACETYLOCTAHYDRONAPHTHALENE S)	9	-	III

14.5 Environmental hazards: This is classified as an environmentally hazardous substance under the UN Model Regulations. This is classified as a Marine Pollutant under the IMDG Code.

14.6 Special precautions for user: None additional

14.7 Maritime transport in bulk according to IMO instruments:

Not applicable

Section 15. Regulatory information

15.1 Safety, health and environmental regulations/legislation specific for the substance or mixture

None additional

15.2 Chemical Safety Assessment

A Chemical Safety Assessment has not been carried out for this product.

Section 16. Other information

Concentration % Limits: SCI 2=95.24% EDI 1=47.62% EDI 2=15.36% SS 1=1.18% EH C2=67.51% EH C3=6.72% EDI 2A=15.36%

Total Fractional Values: SCI 2=1.05 EDI 1=2.10 EDI 2=6.51 SS 1=85.00 EH C2=1.48 EH C3=14.87 EDI 2A=6.51

Key to revisions:

SECTION 3: Composition/information on ingredients

Key to abbreviations:

Abbreviation	Meaning
AH 1	Aspiration Hazard Category 1
ATD 4	Acute Toxicity - Dermal Category 4
ATI 4	Acute Toxicity - Inhalation Category 4
ATO 4	Acute Toxicity - Oral Category 4
EDI 1	Eye Damage / Irritation Category 1
EDI 2	Eye Damage / Irritation Category 2

SAFETY DATA SHEET

In accordance with REACH Regulation EC No.1907/2006!

Product: LILAC FRAGRANCE

Version: 3

EH A1	Hazardous to the Aquatic Environment - Acute Hazard Category 1
EH C1	Hazardous to the Aquatic Environment - Long-term Hazard Category 1
EH C2	Hazardous to the Aquatic Environment - Long-term Hazard Category 2
EH C3	Hazardous to the Aquatic Environment - Long-term Hazard Category 3
FL 3	Flammable Liquid, Hazard Category 3
H226	Flammable liquid and vapour.
H302	Harmful if swallowed.
H304	May be fatal if swallowed and enters airways.
H312	Harmful in contact with skin.
H315	Causes skin irritation.
H317	May cause an allergic skin reaction.
H318	Causes serious eye damage.
H319	Causes serious eye irritation.
H332	Harmful if inhaled.
H335	May cause respiratory irritation.
H400	Very toxic to aquatic life.
H410	Very toxic to aquatic life with long lasting effects.
H411	Toxic to aquatic life with long lasting effects.
H412	Harmful to aquatic life with long lasting effects.
P210	Keep away from heat, sparks, open flames and hot surfaces. - No smoking.
P233	Keep container tightly closed.
P240	Ground/bond container and receiving equipment.
P241	Use explosion-proof electrical, ventilating and lighting equipment.
P242	Use only non-sparking tools.
P243	Take precautionary measures against static discharge.
P261	Avoid breathing vapour or dust.
P264	Wash hands and other contacted skin thoroughly after handling.
P270	Do not eat, drink or smoke when using this product.
P271	Use only outdoors or in a well-ventilated area.
P272	Contaminated work clothing should not be allowed out of the workplace.
P273	Avoid release to the environment.
P280	Wear protective gloves/eye protection/face protection.
P301/310	IF SWALLOWED: Immediately call a POISON CENTER or doctor/physician.
P301/312	IF SWALLOWED: call a POISON CENTER or doctor/physician if you feel unwell.
P302/352	IF ON SKIN: Wash with plenty of soap and water.
P303/361/353	IF ON SKIN (or hair): Remove/take off immediately all contaminated clothing. Rinse skin with water/shower.
P304/340	IF INHALED: Remove victim to fresh air and keep at rest in a position comfortable for breathing.
P305/351/338	IF IN EYES: Rinse cautiously with water for several minutes. Remove contact lenses, if present and easy to do. Continue rinsing.
P310	Immediately call a POISON CENTER or doctor/physician.
P312	Call a POISON CENTRE or doctor/physician if you feel unwell.
P330	Rinse mouth.

SAFETY DATA SHEET

In accordance with REACH Regulation EC No.1907/2006!

Product: LILAC FRAGRANCE

Version: 3

P331	Do not induce vomiting.
P333/313	If skin irritation or rash occurs: Get medical advice/attention.
P337/313	If eye irritation persists: Get medical advice/attention.
P362	Take off contaminated clothing and wash before reuse.
P363	Wash contaminated clothing before reuse.
P370/378	In case of fire: Use carbon dioxide, dry chemical, foam for extinction.
P391	Collect spillage.
P403/233	Store in a well-ventilated place. Keep container tightly closed.
P403/235	Store in a well-ventilated place. Keep cool.
P405	Store locked up.
P501	Dispose of contents/container to approved disposal site, in accordance with local regulations.
SCI 2	Skin Corrosion / Irritation Category 2
SS 1	Sensitization - Skin Category 1
SS 1A	Sensitization - Skin Category 1A
SS 1B	Sensitization - Skin Category 1B
STO-SE 3(RI)	Specific Target Organ Toxicity (Single Exposure) Category 3

The information in this safety data sheet is to the best of our knowledge true and accurate but all data, instructions, recommendations and/or suggestions are made without guarantee.

MYSTIC MOMENTS

MATERIAL SPECIFICATION ISSUE NO : 1

LILAC FRAGRANCE

Odour	Similar in character and intensity to standard
Description	Clear, colourless to pale yellow, liquid
Specific Gravity @ 20°C	0.949 to 0.969
Refractive Index @ 20°C	1.436 to 1.451
Flash Point: (CCCFP)	86 °C

Date Of Issue : 06/09/2023